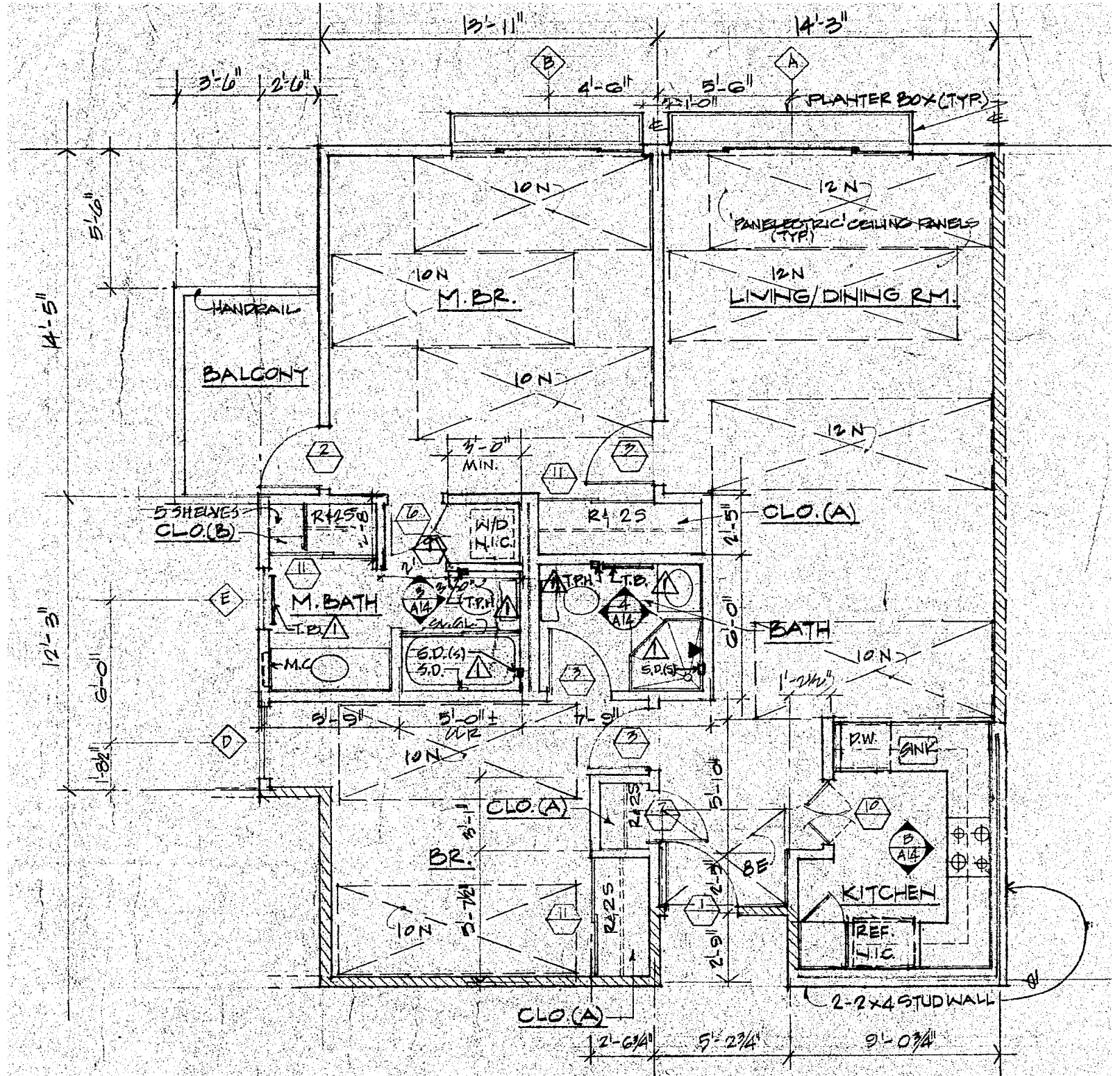


Unit 2A

Phase II drawing
25 Oct 1977

- Building A-101, A-201 and A-206 Building B-101, B-106, B-201, B-206
- Building C-101, C-105, C-106, C-110, C-201, C-205, C-206, and C-210
- Building D-101, D-104, D-108, D-201, D-204, and D-208
- Building E-101, E-105, E-106, E-110, E-201, E-205, E-206, and E-210

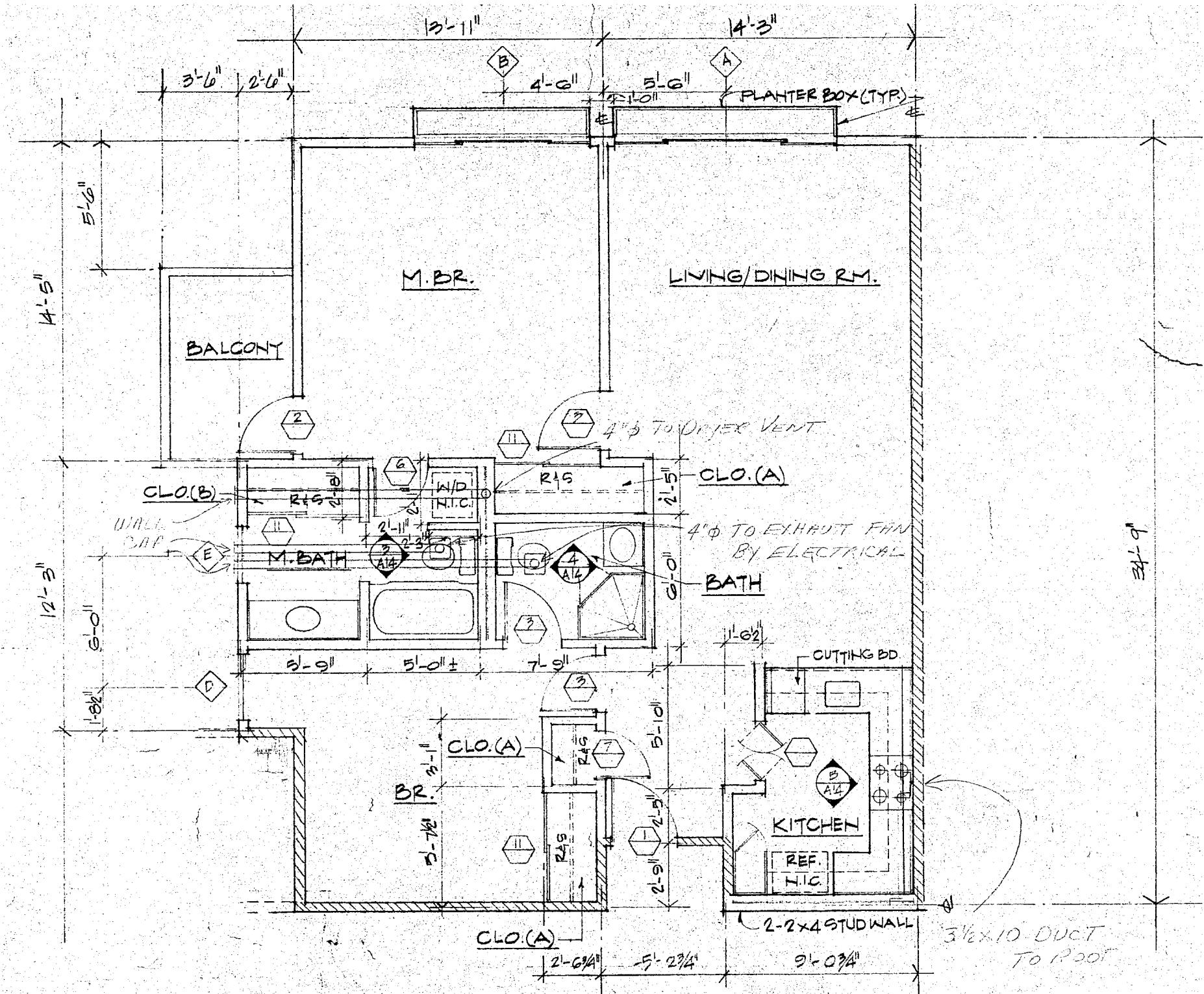
Please note that the drawings are schematic and all dimensions listed should be verified. The drawings may or may not reflect the actual build. In addition, previous residents may have completed some remodeling improvements over the years that may have modified the plan layout of the home as presented.



Unit 2A

Phase II drawing
25 Oct 1977

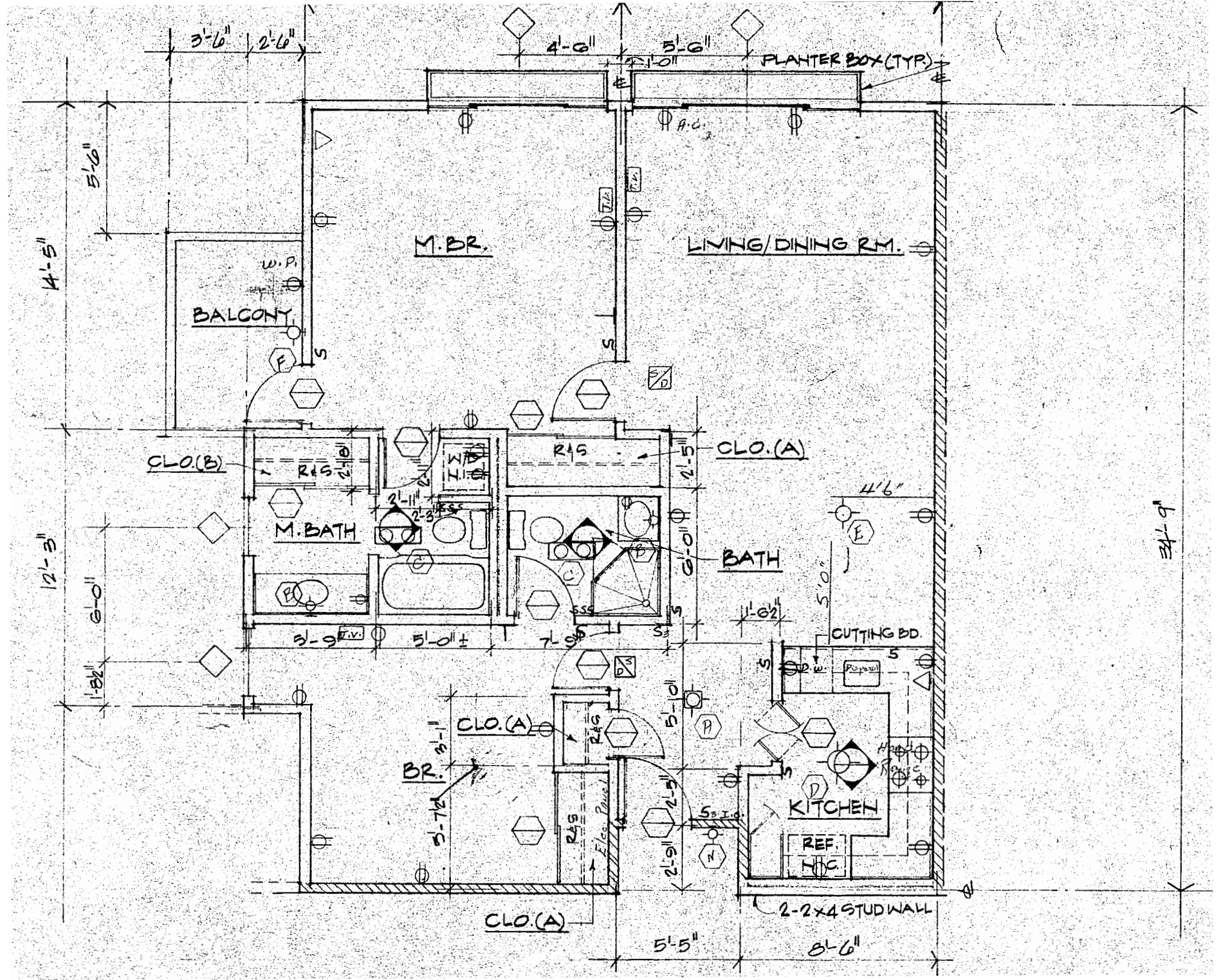
Building A-101, A-201 and A-206 Building B-101, B-106, B-201, B-206
Building C-101, C-105, C-106, C-110, C-201, C-205, C-206, and C-210
Building D-101, D-104, D-108, D-201, D-204, and D-208
Building E-101, E-105, E-106, E-110, E-201, E-205, E-206, and E-210



Unit 2A

Phase II drawing
25 Oct 1977

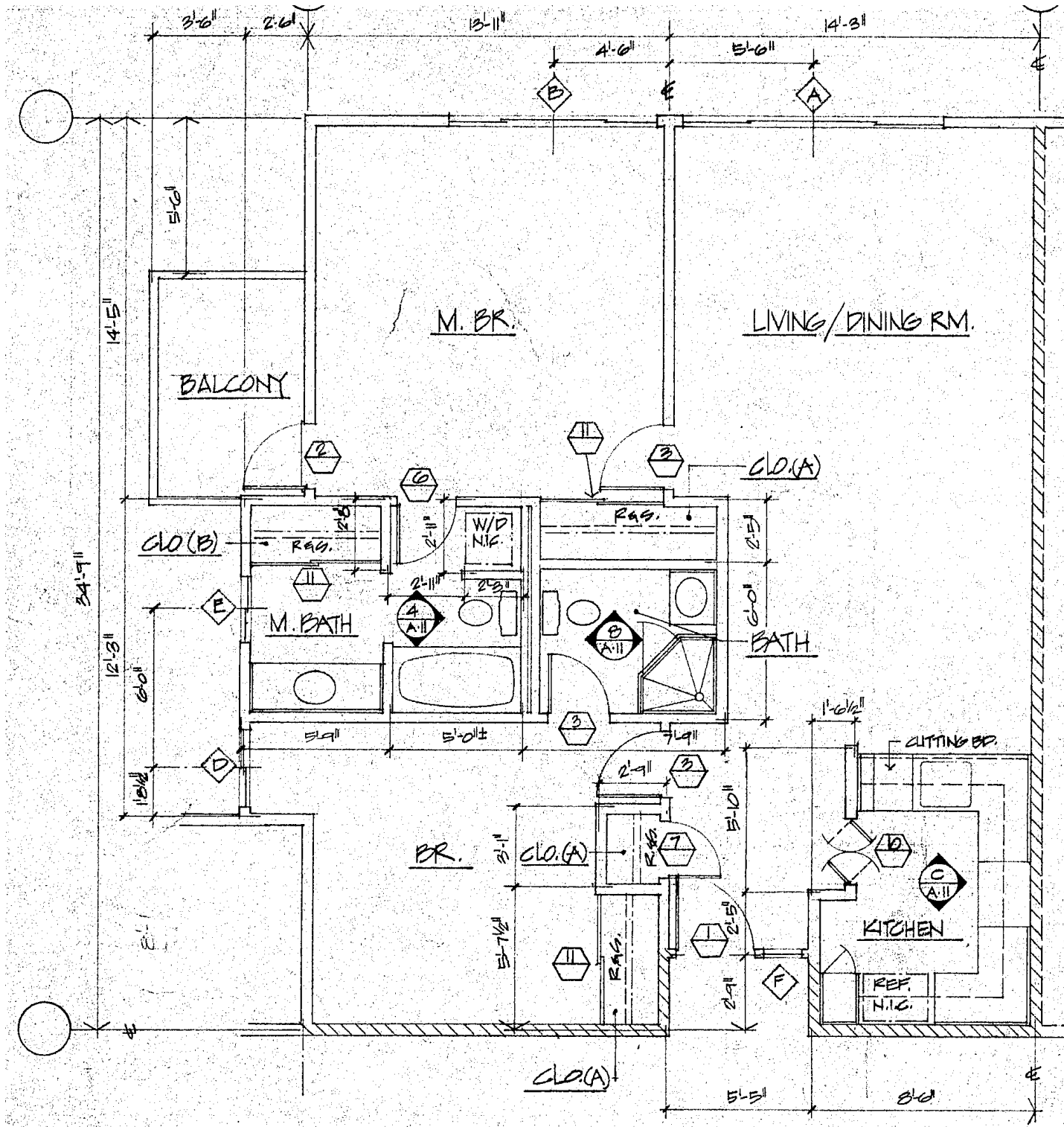
- Building A-101, A-201 and A-206 Building B-101, B-106, B-201, B-206
- Building C-101, C-105, C-106, C-110, C-201, C-205, C-206, and C-210
- Building D-101, D-104, D-108, D-201, D-204, and D-208
- Building E-101, E-105, E-106, E-110, E-201, E-205, E-206, and E-210



Unit 2A

Phase I drawing
27 Oct 1976

Building A-101, A-201 and A-206 Building B-101, B-106, B-201, B-206
Building C-101, C-105, C-106, C-110, C-201, C-205, C-206, and C-210
Building D-101, D-104, D-108, D-201, D-204, and D-208
Building E-101, E-105, E-106, E-110, E-201, E-205, E-206, and E-210



Unit 2A

Building A-101, A-201 and A-206 Building B-101, B-106, B-201, B-206
Building C-101, C-105, C-106, C-110, C-201, C-205, C-206, and C-210
Building D-101, D-104, D-108, D-201, D-204, and D-208
Building E-101, E-105, E-106, E-110, E-201, E-205, E-206, and E-210

Please note that the drawings are schematic and all dimensions listed should be verified. The drawings may or may not reflect the actual build. In addition, previous residents may have completed some remodeling improvements over the years that may have modified the plan layout of the home as presented.

