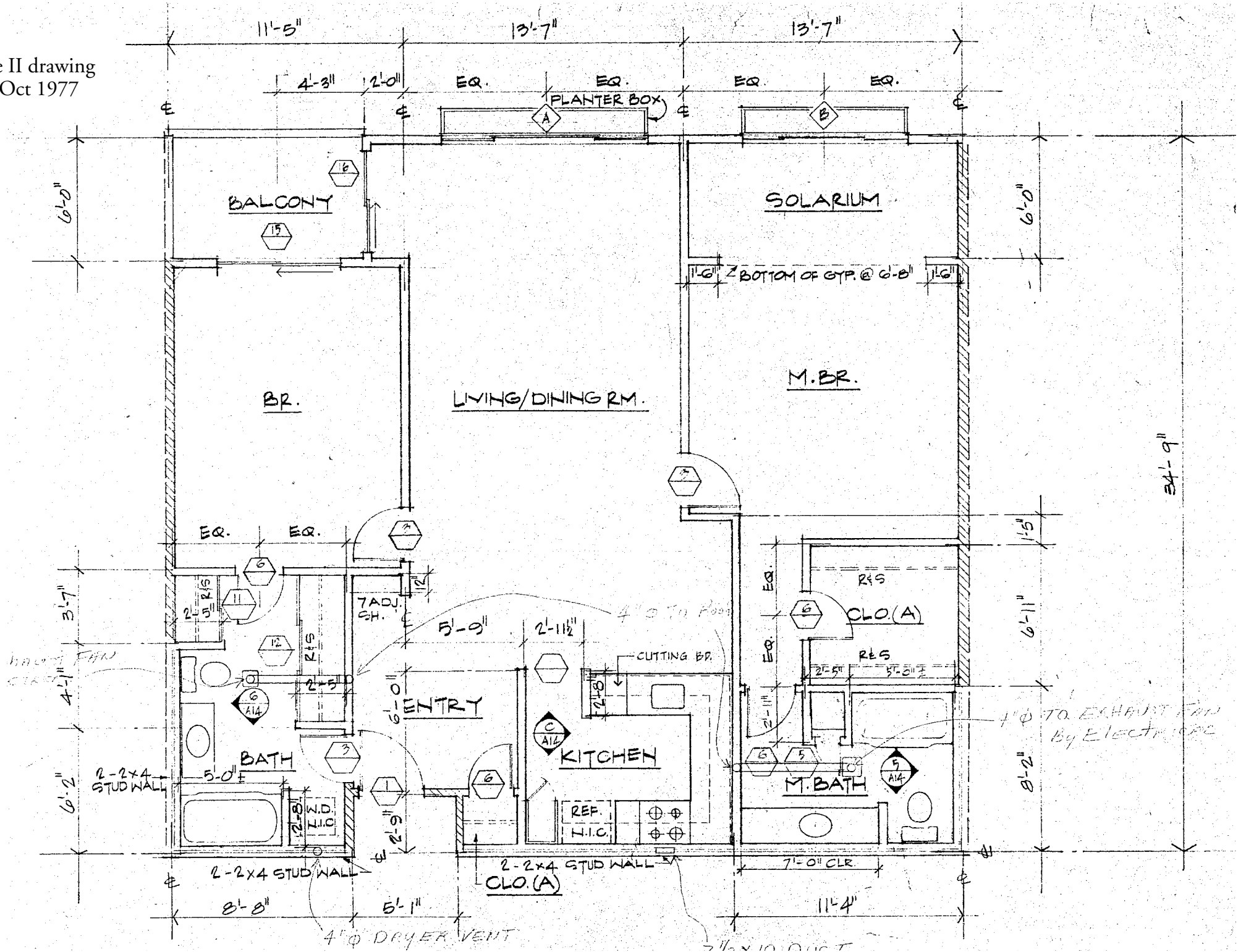




# Unit 2D

Phase II drawing  
25 Oct 1977

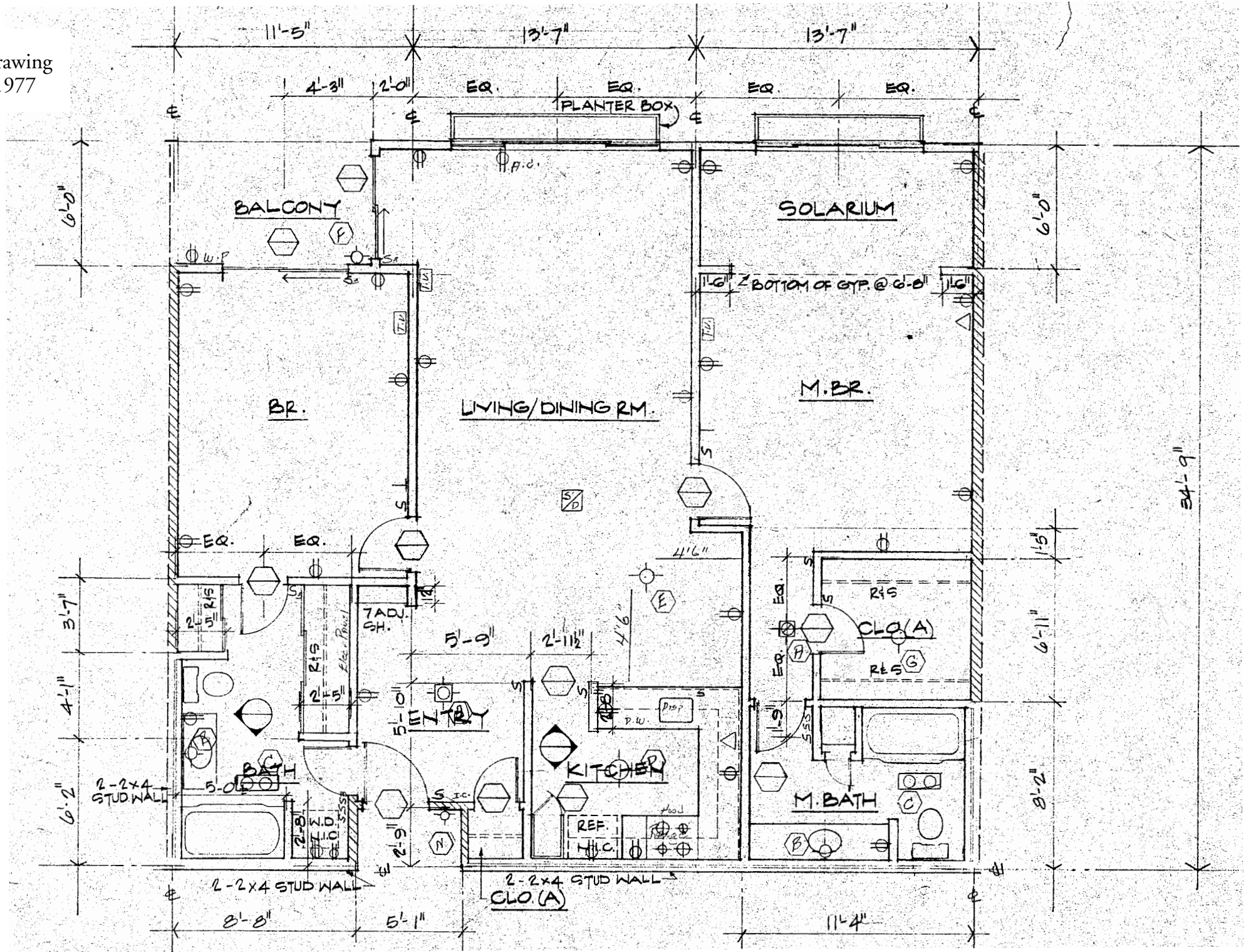
- Building A-101, A-201, and A-206
- Building B-101, B-106, B-201, and B-206
- Building C-103, C-104, C-107, C-108, C-109, C-203, C-204, C-207, C-208, and C-209
- Building D-102, D-103, D-106, D-107, D-202, D-203, D-206 and D-207
- Building E-102, E-103, E-104, E-108, E-109, E-202, E-203, E-204, E-208, and E-209



# Unit 2D

Phase II drawing  
25 Oct 1977

- Building A-101, A-201, and A-206
- Building B-101, B-106, B-201, and B-206
- Building C-103, C-104, C-107, C-108, C-109, C-203, C-204, C-207, C-208, and C-209
- Building D-102, D-103, D-106, D-107, D-202, D-203, D-206 and D-207
- Building E-102, E-103, E-104, E-108, E-109, E-202, E-203, E-204, E-208, and E-209



# Unit 2D

Phase I drawing  
27 Oct 1976

Drawing A9: #1MC All\_40 sheets.pdf, Page 9: Unit floor plans. Dated 27 Oct 1976

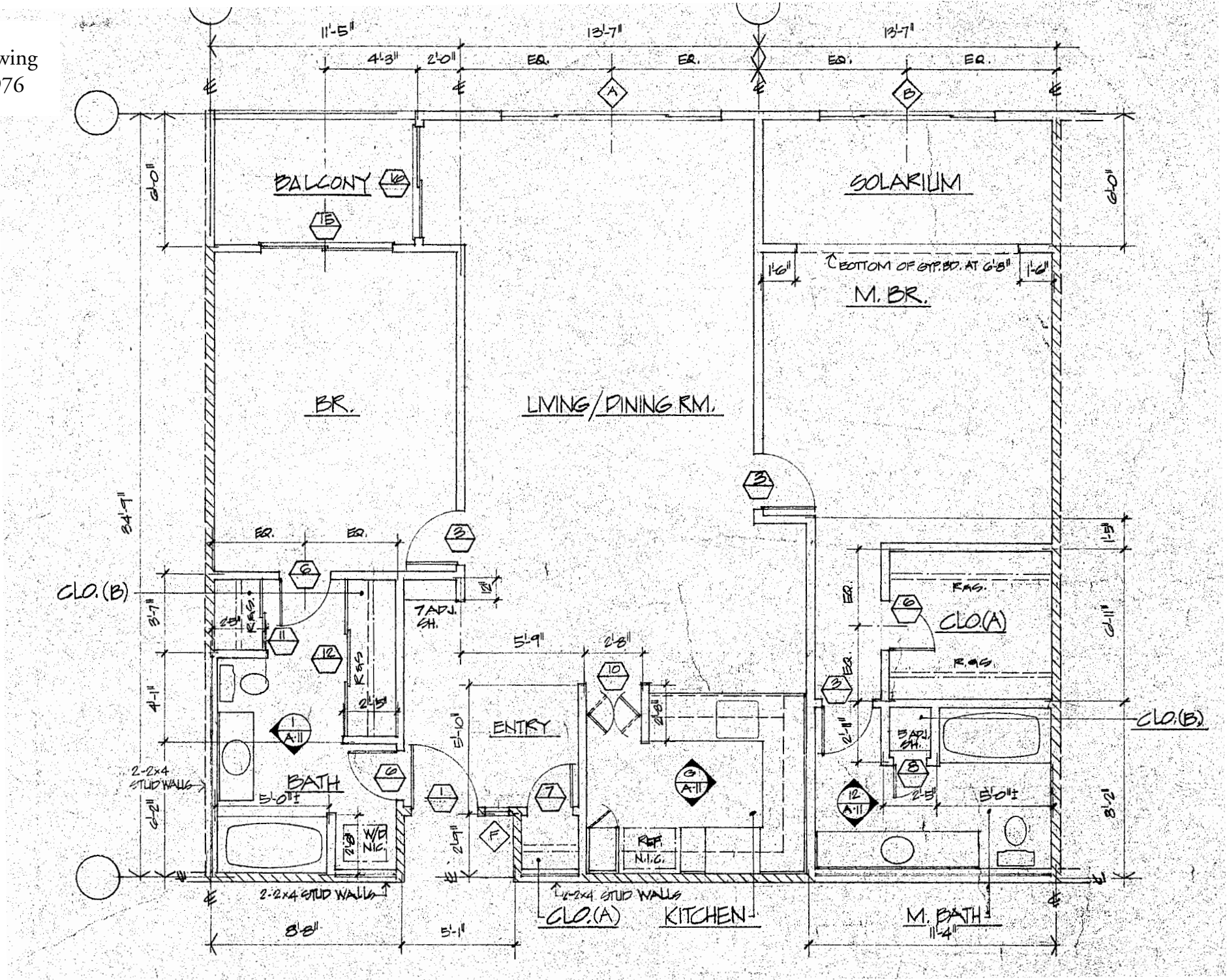
Building A-101, A-201, and A-206

Building B-101, B-106, B-201, and B-206

Building C-103, C-104, C-107, C-108, C-109, C-203, C-204, C-207, C-208, and C-209

Building D-102, D-103, D-106, D-107, D-202, D-203, D-206 and D-207

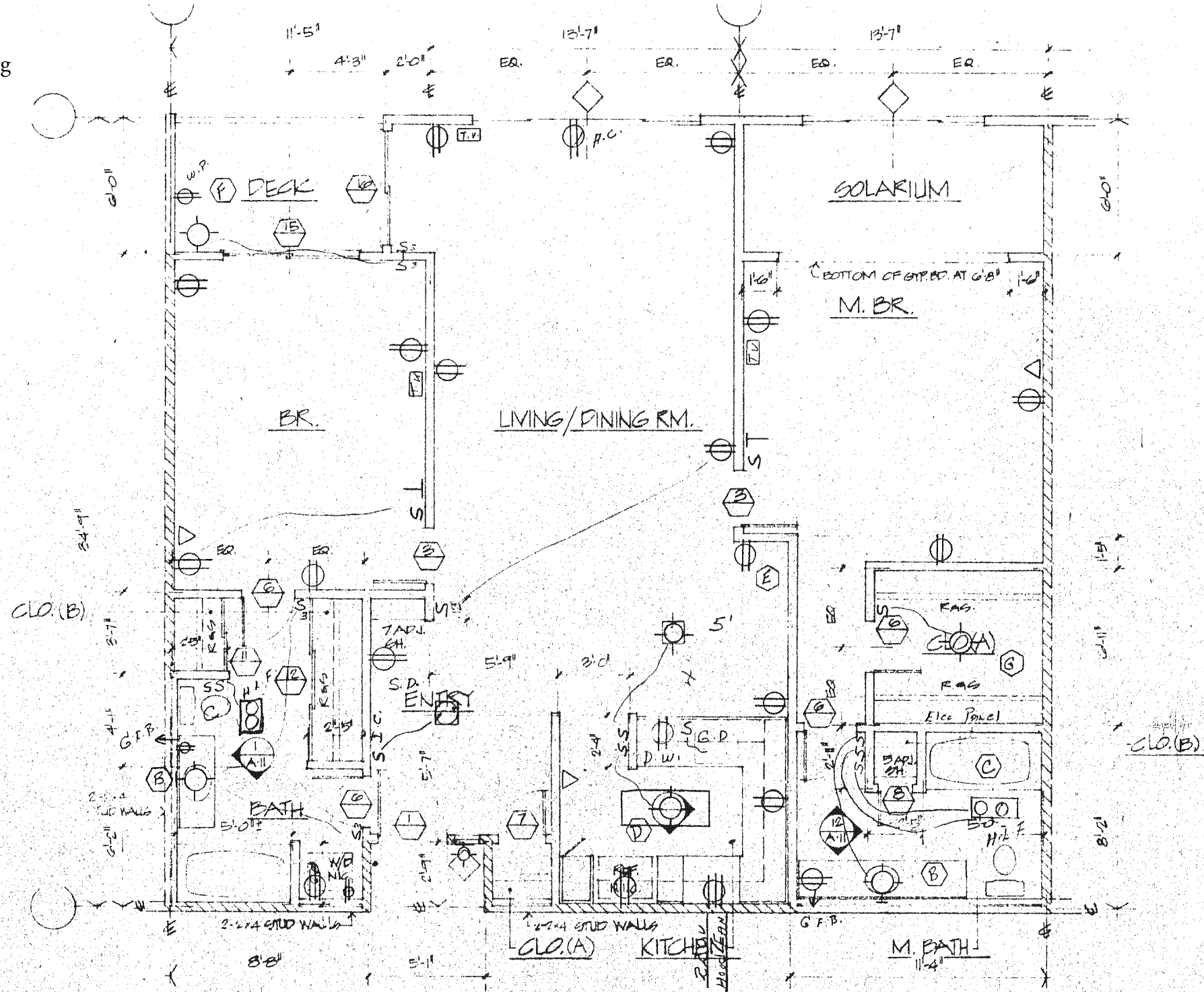
Building E-102, E-103, E-104, E-108, E-109, E-202, E-203, E-204, E-208, and E-209



Page 5 of 6  
Unit 2D

Phase I drawing  
27 Oct 1976

- Building A-101, A-201, and A-206
- Building B-101, B-106, B-201, and B-206
- Building C-103, C-104, C-107, C-108, C-109, C-203, C-204, C-207, C-208, and C-209
- Building D-102, D-103, D-106, D-107, D-202, D-203, D-206 and D-207
- Building E-102, E-103, E-104, E-108, E-109, E-202, E-203, E-204, E-208, and E-209



# Unit 2D

- Building A-101, A-201, and A-206
- Building B-101, B-106, B-201, and B-206
- Building C-103, C-104, C-107, C-108, C-109, C-203, C-204, C-207, C-208, and C-209
- Building D-102, D-103, D-106, D-107, D-202, D-203, D-206 and D-207
- Building E-102, E-103, E-104, E-108, E-109, E-202, E-203, E-204, E-208, and E-209

Please note that the drawings are schematic and all dimensions listed should be verified. The drawings may or may not reflect the actual build. **Indeed, in buildings C, D, and E, the sliding door between the living room and balcony is positioned as in the picture on page 4, not as shown in any of the three drawings.** In addition, previous residents may have completed some remodeling improvements over the years that may have modified the plan layout of the home as presented.

