

ARCHITECTURAL	
A-1	SITE PLAN
A-2	BLDG 'C' PLANS
A-3	BLDG 'D' PLANS
A-4	BLDG 'E' PLANS
A-5	ELEVATIONS - BLDG 'C'
A-6	ELEVATIONS - BLDG 'D'
A-7	ELEVATIONS - BLDG 'E'
A-8	SECTIONS
A-9	UNIT FLOOR PLANS
A-10	UNIT FLOOR PLANS
A-11	UNIT FLOOR PLANS
A-12	STAIR PLANS, ELEVATOR & DETAILS
A-13	STAIR PLANS, ELEVATOR & DETAILS
A-14	INTERIOR ELEVATIONS
A-15	FINISH & DOOR SCHEDULE
A-16	WALL SECTIONS
A-17	MISCELLANEOUS DETAILS

STRUCTURAL	
S-1	TYPICAL DETAILS & GENERAL NOTES
S-2	BLDG 'C' FOUNDATION PLAN & SECTION
S-3	BLDG 'E' FOUNDATION PLAN & SECTION
S-4	FOUNDATION DETAILS
S-5	BLDG 'D' FOUNDATION PLAN
S-6	BLDG 'C' FIRST FLOOR SLAB PLAN
S-7	BLDG 'D' FIRST FLOOR SLAB PLAN
S-8	BLDG 'E' FIRST FLOOR SLAB PLAN
S-9	BLDG 'C' & 'E' SECOND FLOOR FRAMING PLAN
S-10	BLDG 'C' & 'E' PENTHOUSE FLOOR FRAMING PLAN
S-11	BLDG 'C' & 'E' ROOF FRAMING PLAN
S-12	SECTIONS
S-13	SECTIONS
S-14	BLDG 'D' SECOND FLOOR FRAMING PLAN
S-15	BLDG 'D' PENTHOUSE FLOOR FRAMING PLAN

LANDSCAPING	
L-1	LANDSCAPE CONSTRUCTION, DETAILS, GRADING & LIGHTING PLAN
L-2	IRRIGATION PLAN
L-3	PLANTING PLAN
PLUMBING	
P-0	TO P-5 PLUMBING DRAWINGS
MECHANICAL	
M-1	TO M-8 MECHANICAL DRAWINGS
ELECTRICAL	
E-1	TO E-9 ELECTRICAL DRAWINGS

- BUILDING CONSTRUCTION INFO.
TYPE OF OCCUPANCY
F-1 PARKING LEVEL
H FIRST FLOOR THRU PENTHOUSE
TYPE OF CONSTRUCTION TYPE V I-HR
FIRE ZONE: III
L.B.C. 1978 EDITION
- ACOUSTICALLY TREATED WALLS - SEE FLOOR PLANS A10, A11, A12, DETAILS S13, S14 AND SPEC. FOR SPECIFIC REQUIREMENTS.
- ALL DIMENSIONS ARE FACE OF STUD (F.O.S.) UNLESS NOTED OTHERWISE.
- INSULATION REQUIREMENTS:
EXTERIOR WALLS, PARTY AND CORNER WALLS AND SECOND AND PENTHOUSE FLOORS - 2" EXT. ROOF AND BALCONIES (W/UNT BELON) - 1" EXT.

- FOR SYMBOLS - SEE A2 FOR ABBREVIATIONS - SEE A2
- PROVIDE KNOCK OUT FRAME FOR FUTURES THRU THE WALL A/C UNIT IN WALL BELOW E OF WINDOW TYPE A FOR EACH UNIT AT FIRST AND SECOND FLOOR; AND IN BALCONY STAIRS WALL FOR EACH UNIT AT PENTHOUSE LEVEL.
- VERIFY ALL F.E.C. LOCATION W/FIRE MARSHAL BEFORE INSTALLATION. PROVIDE 5 LBS UNIT
- DOORS BT ARE SPECIAL DES. W/MAGNETIC HOLD OPEN DEVICES AND ARE CLOSED AUTOMATICALLY W/IONIZATION DETECTOR. VERIFY EXACT REQUIREMENT W/FIRE MARSHAL.

- DO NOT INSTALL ANY UTILITY LINES OR ANY OTHER ITEMS OTHER THAN THOSE PERTAINING TO ELEVATOR EQUIPMENT IN ELEVATOR MACHINE RM. OR ELEVATOR SHAFT.
- ALL GLAZING SHALL CONFORM TO "SAFETY STANDARD FOR ARCH. GLAZING MATERIAL (16 CFR PART 1601) PER U.S. CONSUMER PRODUCT SAFETY COMMISSION.
- ROOF GRAVEL SHALL BE MOCHA BROWN. ROOF ROCK SAME AS PHASE I.
- PROVIDE COMPLETE CENTRAL VACUUM SYSTEM SIMILAR TO PHASE I.
- ADD 3/8" SUP. DD. CEILING MOUNTED ON RCI CHANNEL IN ELEV. EQUIP RMs. THE CHANNEL SHALL BE MOUNTED ON 2" X 4" LARGES PIPING AND 2" INSULATION BLANKS (NEW) SHALL BE INSTALLED BT. THE CHANNELS. SEAL PERIMETER OF CEILING W/ NON-HARDENING SEALING COMPOUND.

LEGEND	
---	EXISTING GRADES
---	NEW GRADES
---	STORM DRAIN LINES (ACP EXCEPT AS NOTED)
---	SUB-SURFACE DRAIN LINE (SEE SPEC.)
---	CATCH BASIN
□	FLOOR DRAIN
○	EXIST. TREES - ALL TO REMAIN
○	CONSTRUCTION JOINT
---	ASBESTOS CEMENT PIPE
---	CAST IRON PIPE
---	SPOT ELEVATION
---	NO PARKING SIGN DOWN SOUTH
△	TRANSFORMER LOCATION
△	DRP. SERVED
△	GAS METER LOCATION

HOOVER ASSOCIATES ARCHITECTS
701 WELCH ROAD
PALO ALTO, CA. 94304

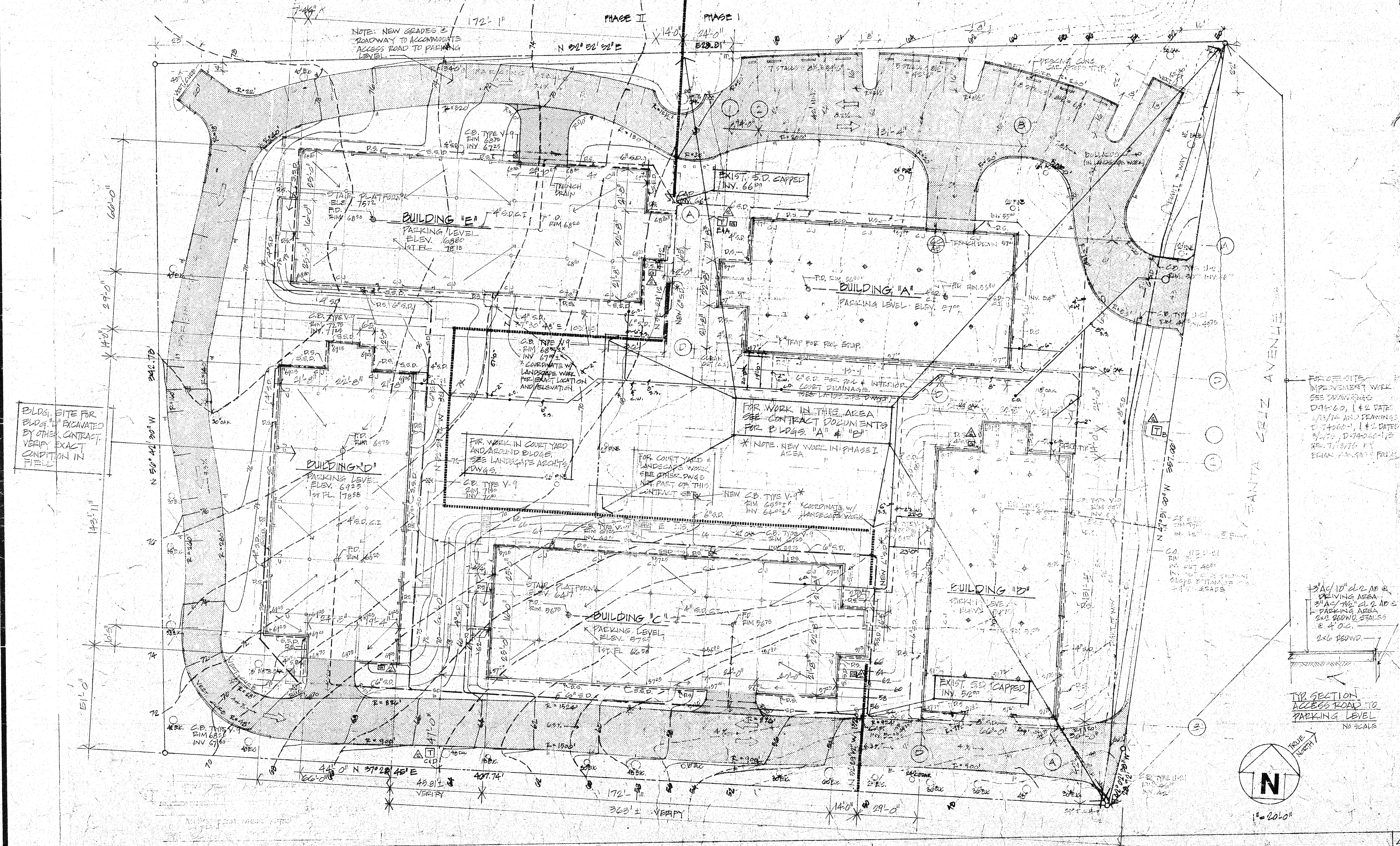
GENERAL NOTES (CONT'D)

- PAINT ALL ROOF TOP EQUIPMENT AND METAL WITH 2 COATS OF PAINT, ONE GALVANIZED PRIMER AND ONE FINISH COAT.
- ALL SOUND CONTROL WALLS SHALL BE BUILT SAME AS PHASE I BUILDINGS. IN ADDITION, INSTALL CONTINUOUS SEALANT AT JOINTS AND CEILING JOINTS; BEAD OF SEALANT AT BOTTOM OF UPPER FACE PLATE; AND LOWER #10 INSULATION PAD COMPLETELY AROUND ALL DEVICE PLATES; I.E. ELEC. TEL. TV, ETC. IN SOUND CONTROLLED WALLS.
- FINISH & INSTALL MIRRORED WARDROBE DOORS SIMILAR TO PHASE I.
- ALL HARDWARE SHALL BE SIMILAR TO PHASE I.
- ALL BOOKSHELVES SHALL BE MANUFACTURED BY CABINET MAKER AND INSTALLED IN APPROPRIATE SPACINGS.
- DO NOT INSTALL ANY UTILITY LINES IN STORAGE RM. W/ LOCKERS. SEE A17 FOR LOCKER LAYOUT.

DRAWING INDEX

GENERAL NOTES

LEGEND



FOR OFF-SITE PIPEMENT WORK SEE DRAWINGS D-11-60, D-12-60, D-13-60, D-14-60, D-15-60, D-16-60, D-17-60, D-18-60, D-19-60, D-20-60, D-21-60, D-22-60, D-23-60, D-24-60, D-25-60, D-26-60, D-27-60, D-28-60, D-29-60, D-30-60, D-31-60, D-32-60, D-33-60, D-34-60, D-35-60, D-36-60, D-37-60, D-38-60, D-39-60, D-40-60, D-41-60, D-42-60, D-43-60, D-44-60, D-45-60, D-46-60, D-47-60, D-48-60, D-49-60, D-50-60, D-51-60, D-52-60, D-53-60, D-54-60, D-55-60, D-56-60, D-57-60, D-58-60, D-59-60, D-60-60, D-61-60, D-62-60, D-63-60, D-64-60, D-65-60, D-66-60, D-67-60, D-68-60, D-69-60, D-70-60, D-71-60, D-72-60, D-73-60, D-74-60, D-75-60, D-76-60, D-77-60, D-78-60, D-79-60, D-80-60, D-81-60, D-82-60, D-83-60, D-84-60, D-85-60, D-86-60, D-87-60, D-88-60, D-89-60, D-90-60, D-91-60, D-92-60, D-93-60, D-94-60, D-95-60, D-96-60, D-97-60, D-98-60, D-99-60, D-100-60.

REV. 25 OCT 77
REV. 5 MAY 77
REV. 2 APR 77

**PHASE II
MENLO COMMONS**
2140 SANTA CRUZ AVE
MENLO PARK, CALIF.

SITE PLAN
PLUMBING

SCALE AS NOTED
DATE 20 MAR. 77
PROJECT NO. 4

DRAWING NUMBER
AT