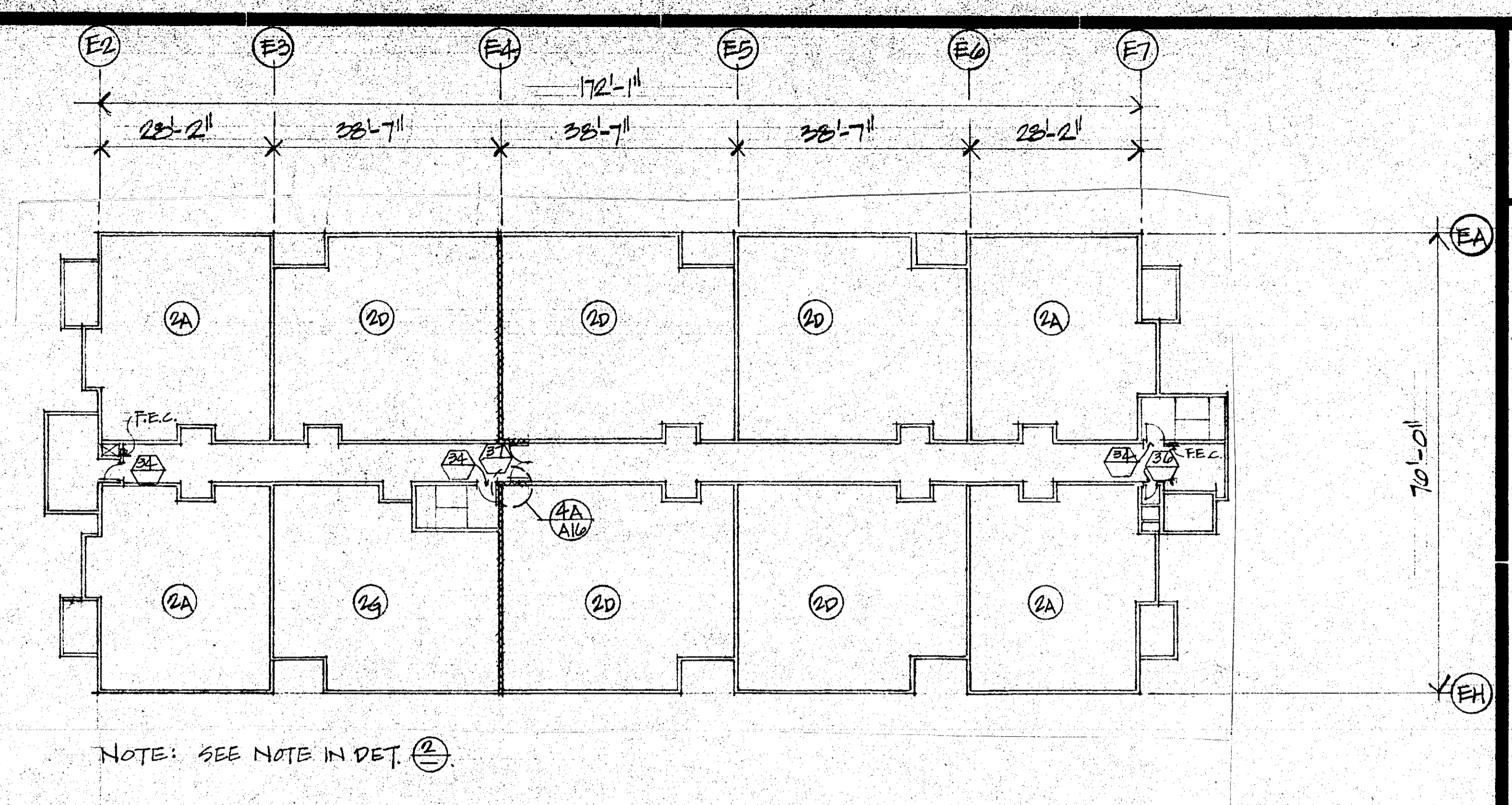


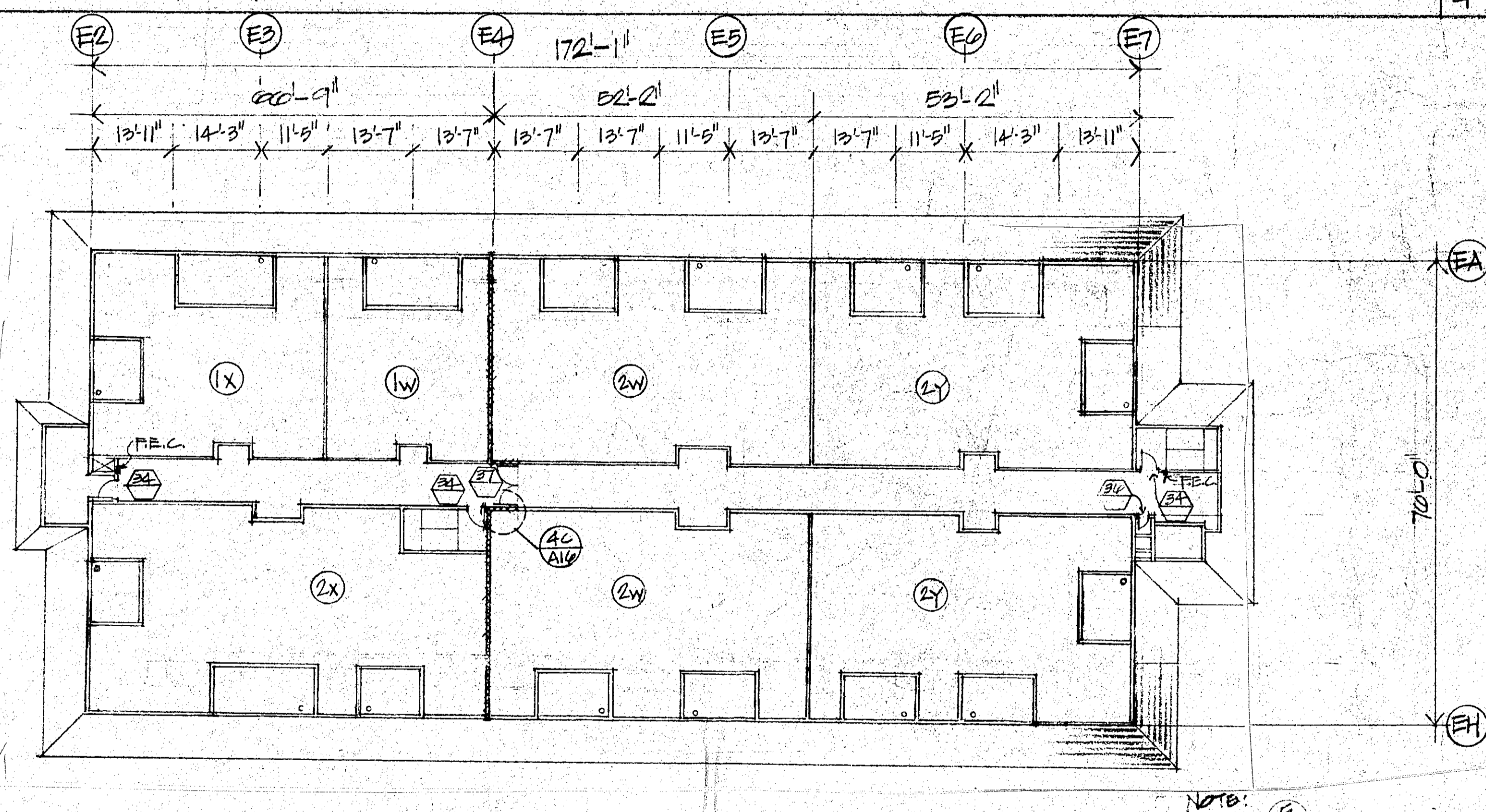
NOTE: SEE NOTE IN DET. (2)  
**ROOF PLAN**

4



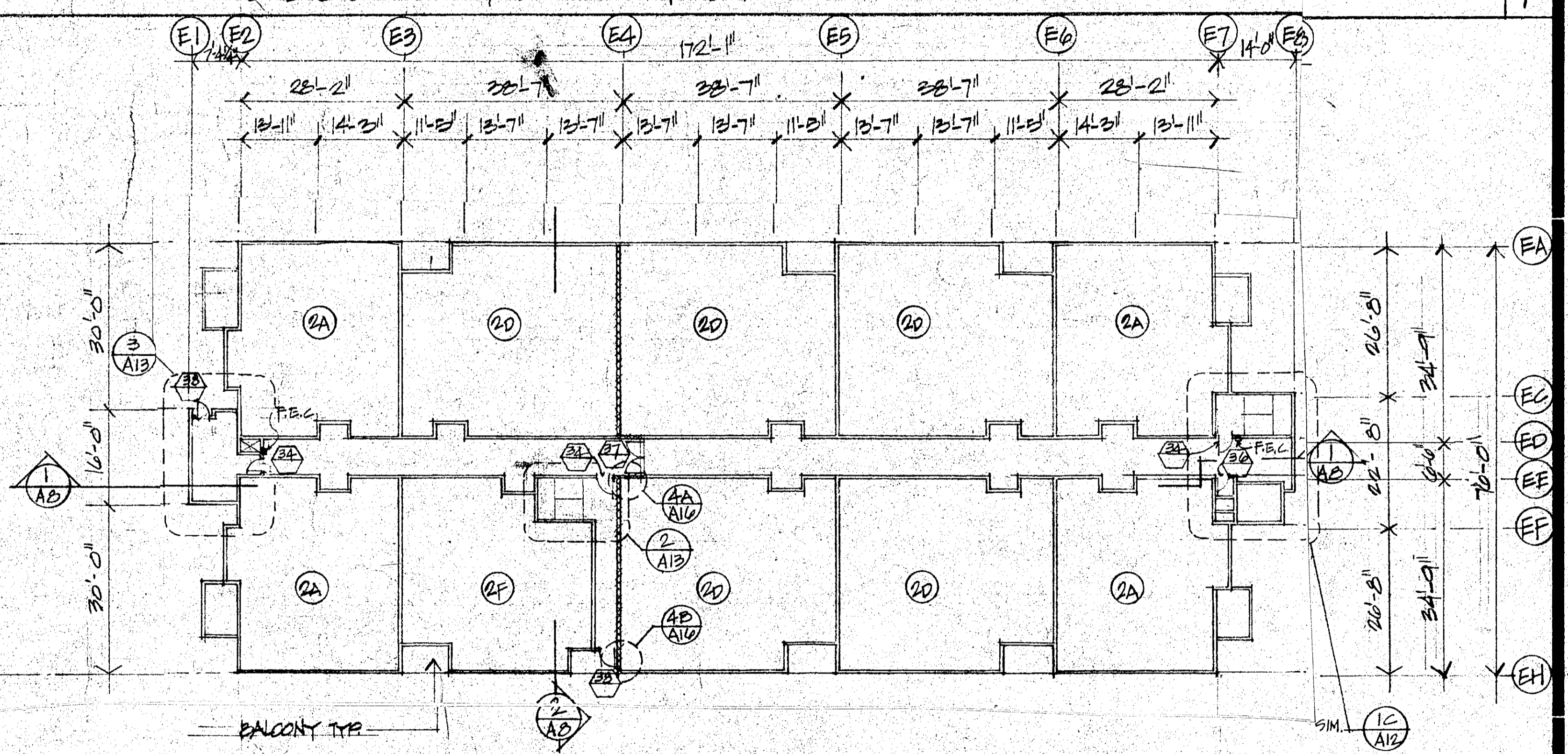
NOTE: SEE NOTE IN DET. (2)  
**SECOND FLOOR PLAN**

1



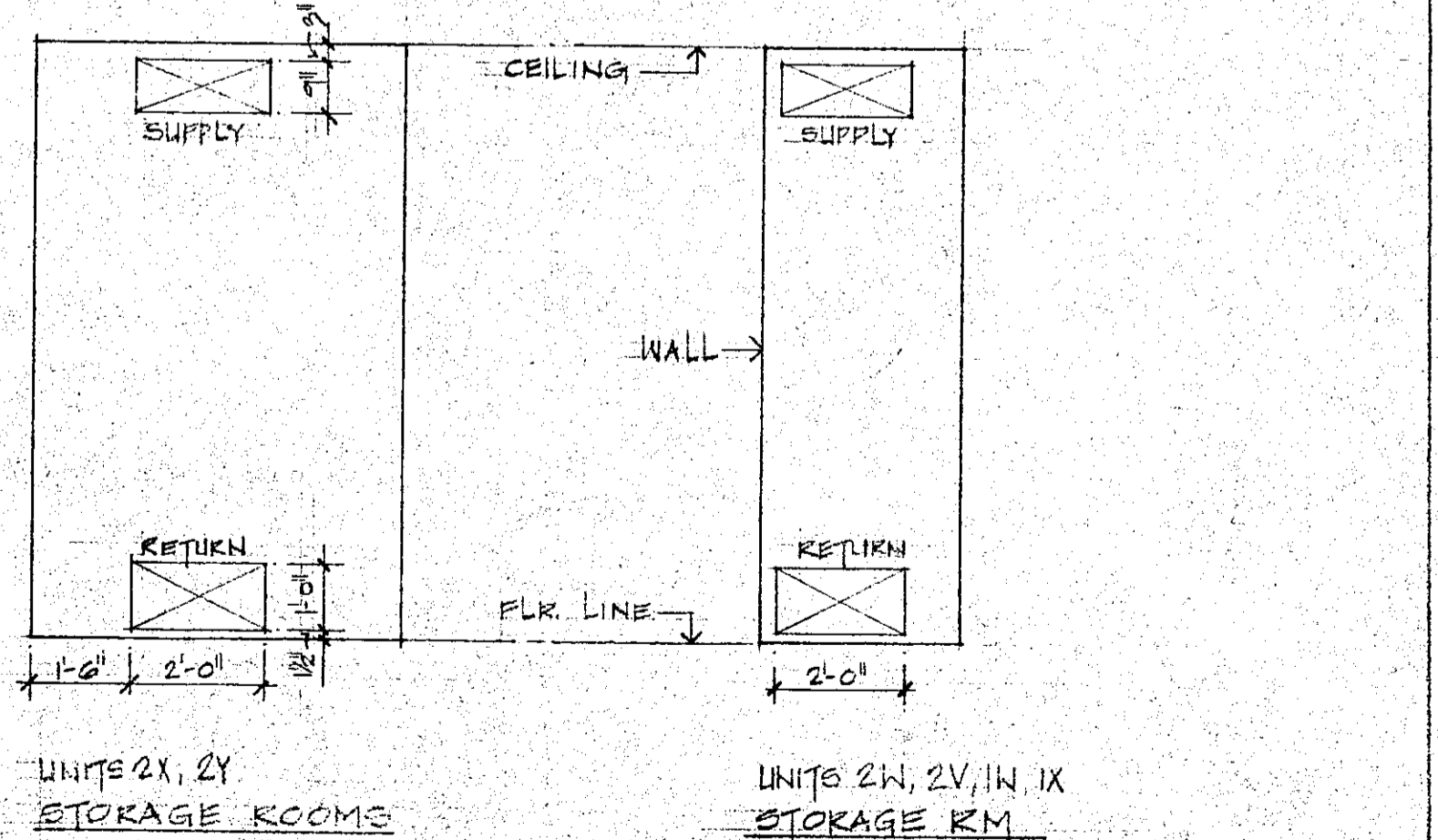
NOTE: SEE NOTE IN DET. (2)  
**PENTHOUSE FLOOR PLAN**

5



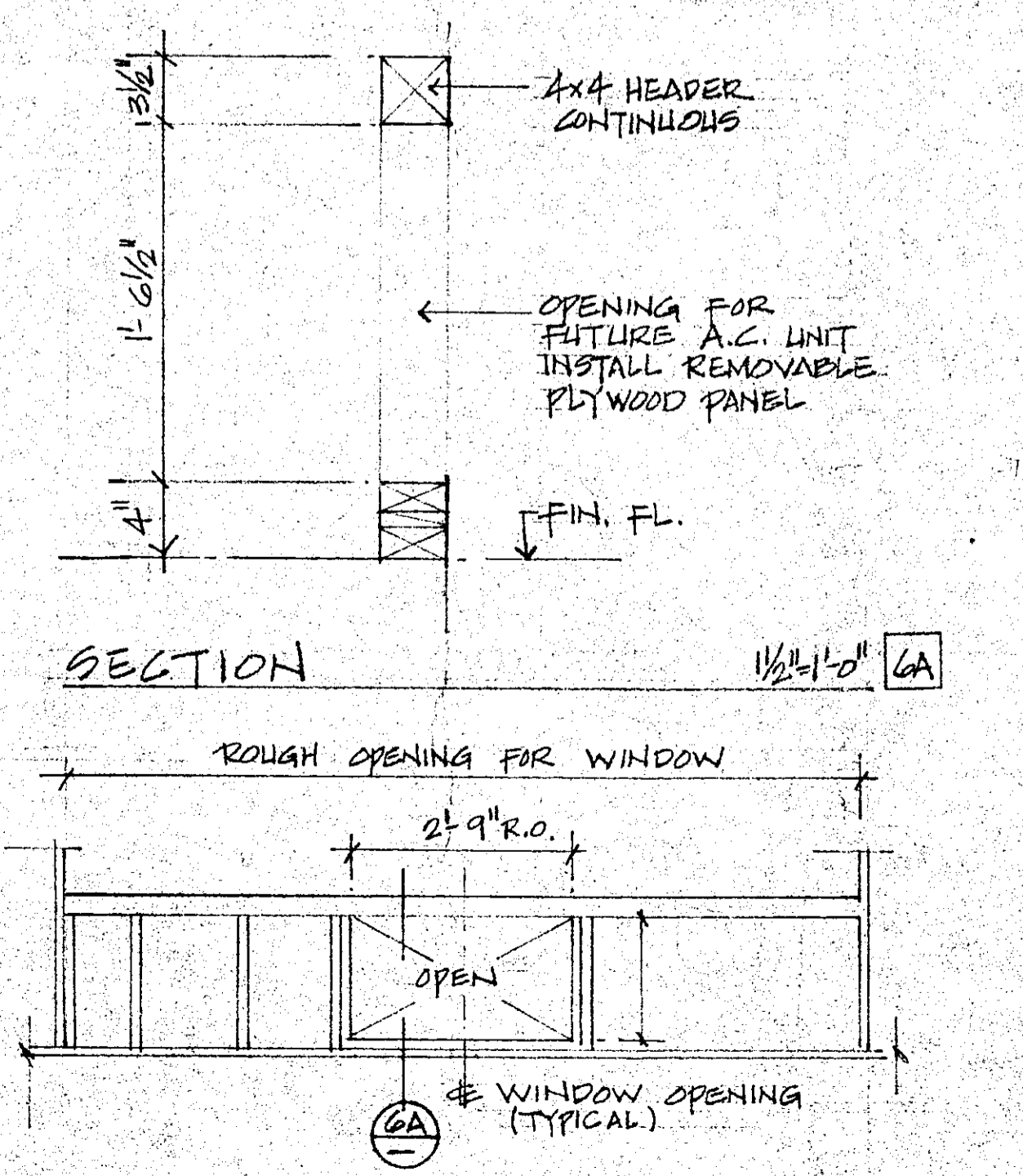
NOTE: BLDG. "E" SIM. TO BLDG. "C". SEE DWG. A.2 FOR ALL TYPICAL INFO. UNLESS NOTED OTHERWISE IN THIS DWG.  
**FIRST FLOOR PLAN**

2



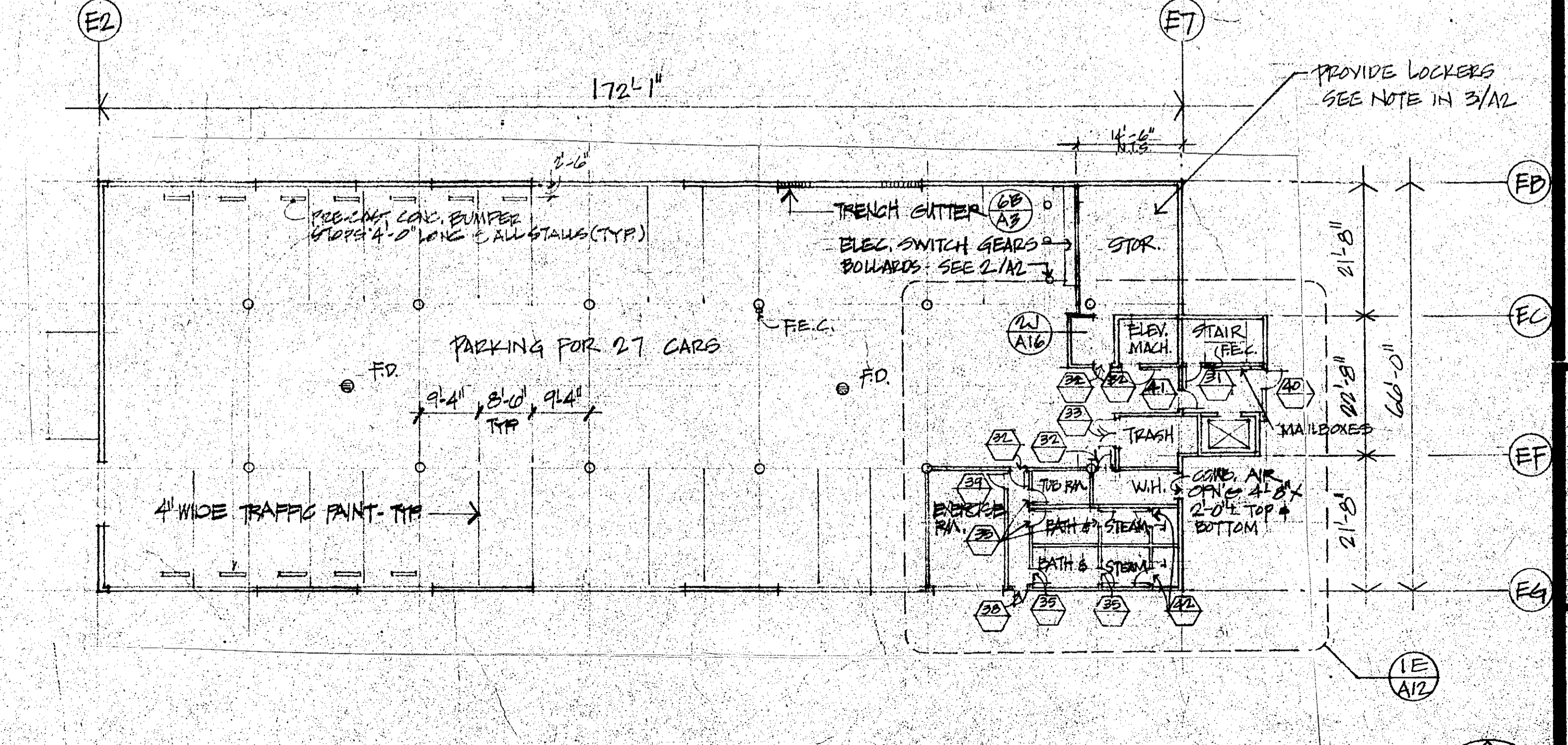
UNITS 2X, 2Y STORAGE ROOMS  
 UNITS 2W, 2V, 1X STORAGE RM

NOTES:  
 1. LOCATE SUPPLY & RETURN OPENINGS ON EXTERIOR WALL OF EACH STORAGE ROOM DESIGNATED.  
 2. LOCATE EACH CONDENSING UNIT ON WALL OF THE STORAGE ROOM ADJACENT TO BALCONY ROUGH OPENING. FOR CONDENSING UNIT IS 27" WIDE BY 31" HIGH IN THE WALL AS REQUIRED FOR THE UNIT. VERIFY EXACT LOCATION WITH THE CONDENSING UNIT.  
 3. ELECTRIC REQUIREMENTS:  
 (A) CONDENSING UNITS 99GROOL COMP. 5, 12, 24, 41 PAN 3/2 3 15/4 AMPS TOTAL.  
 (B) FAN COIL UNIT 40A510 WITHOUT HEATER IS 1/4 HP 1.5 AMPS.  
 LOCATE ELECT. OUTLETS AS SHOWN.



**ELEVATION @ WINDOW**  
 AT 1ST & 2ND FL. ONLY

6



NOTE: 1) SEE STRUCTURAL DWGS FOR ALL JOIN NOT SHOWN HERE.  
 2) SEE DWG. A.1 FOR DRAINAGE AND OTHER INFO.

3

**PHASE II  
 MENLO COMMONS  
 2140 SANTA CRUZ AVE  
 MENLO PARK, CALIF.**

**BUILDING "E" PLANS**

SCALE: 1/8" = 1'-0"  
 DATE: 05 OCT. 71  
 PROJECT NO. [ ]  
 DRAWING NUMBER: **A4**

LAYOUT FOR A.C. UNITS @ PENTHOUSE AREAS (FOR FRAMING ONLY) 7

FRAMING FOR A.C. UNIT 6