

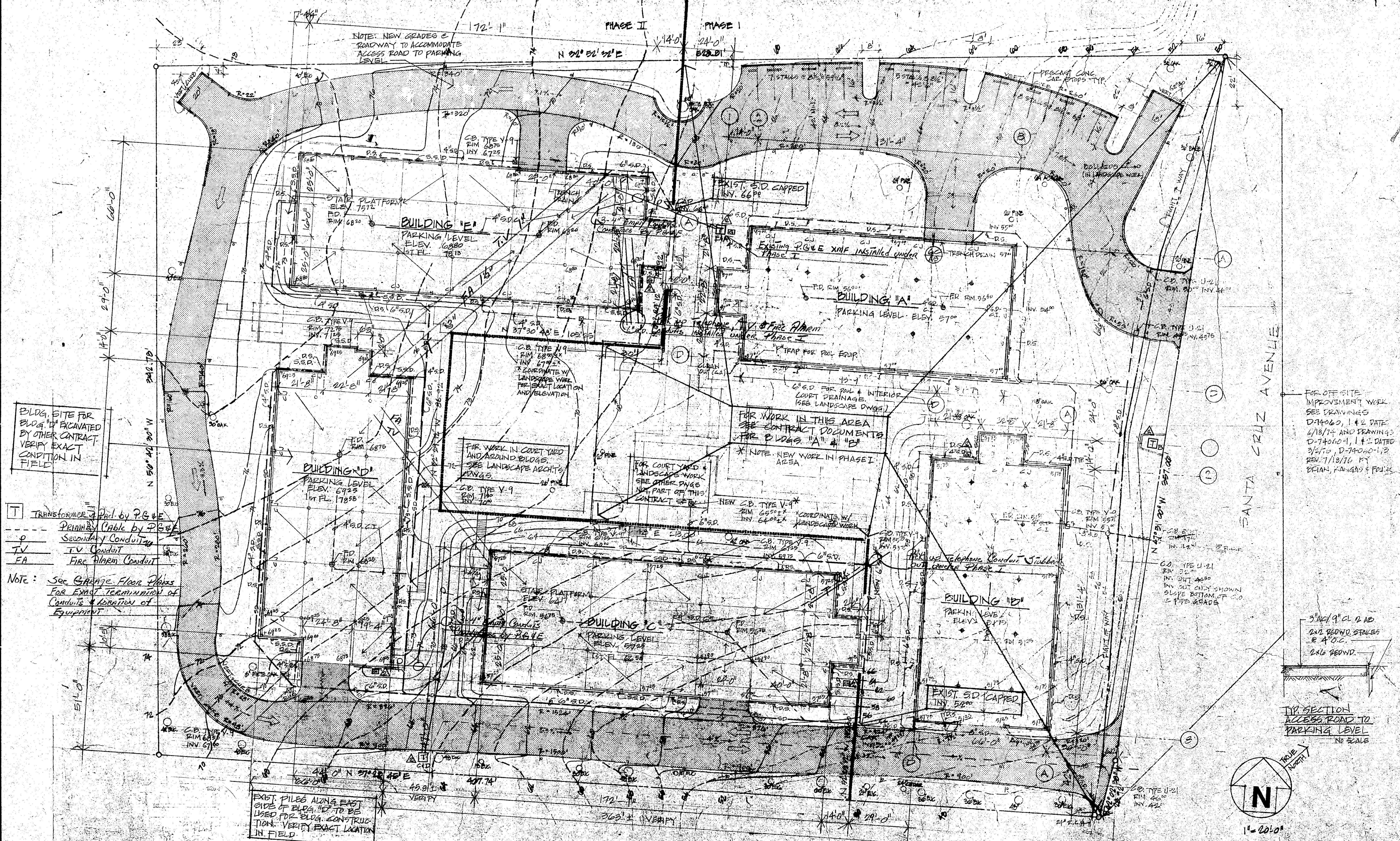
**NOTE:**  
 THIS DRAWING ISSUED FOR FOUNDATION AND SITE WORK ONLY  
 SEE ALSO PHASE I DRAWINGS FOR WORK REQUIRED IN PHASE II AREA.

- BUILDING CONSTRUCTION INFO.  
 TYPE OF OCCUPANCY  
 F-1 PARKING LEVEL  
 H FIRST FLOOR THRU PENTHOUSE  
 TYPE OF CONSTRUCTION TYPE V I HR  
 FIRE ZONE: III  
 U.B.C. 1973 EDITION
- ACOUSTICALLY TREATED WALLS SEE FLOOR PLANS A10, 11, 12, DETAILS 2/A18 AND SPECS. FOR SPECIFIC REQUIREMENTS.
- ALL DIMENSIONS ARE FACE OF STUD (F.O.S) UNLESS NOTED OTHERWISE.
- INSULATION REQUIREMENTS:  
 EXTERIOR WALLS, PARTY AND CORRIDOR WALLS AND SECOND AND PENTHOUSE FLOORS - 2" BATT.  
 ROOF AND BALCONIES (W/UNT BELOW) - 6" BATT.
- FOR SYMBOLS - SEE A2  
 FOR ABBREVIATIONS - SEE A2
- PROVIDE KNOCK OUT FRAME FOR FUTURE THRU-WALL A/C UNIT IN WALL BELOW E OF WINDOW TYPE A FOR EACH UNIT AT FIRST AND SECOND FLOOR; AND IN BALCONY STORAGE WALL FOR EACH UNIT AT PENTHOUSE LEVEL.
- VERIFY ALL F.E.C. LOCATION W/FIRE MARSHAL BEFORE INSTALLATION.

**LEGEND**

---	EXISTING GRADES
---	NEW GRADES
SD	STORM DRAIN LINES (A.C.P. EXCEPT AS NOTED)
SSD	SUBSURFACE DRAIN LINE (SEE SPECS.)
CB	CATCH BASIN
FD	FLOOR DRAIN
OAK	EXIST. TREES - ALL TO REMAIN
C/J	CONSTRUCTION JOINT
A.C.P.	ASBESTOS CEMENT PIPE
C.I.	CAST IRON PIPE
+68"	SPOT ELEVATION
10	NO PARKING SIGN
D.S.	DOWN SPOUT
TRANS	TRANSFORMER LOCATION
AC	AREA SERVED
GM	GAS METER LOCATION

3 GENERAL NOTES 2 LEGEND



BLDG. SITE FOR BLDG. TO BE EXCAVATED BY OTHER CONTRACT. VERIFY EXACT CONDITION IN FIELD

T Transformer 480V by P.G. & E  
 P Primary Cable by P.G. & E  
 TV Secondary Conduit  
 FA Fire Alarm Conduit

Note: See Garage Floor Plans For Exact Termination of Conduits & Location of Equipment

FOR OFF-SITE IMPROVEMENT WORK SEE DRAWINGS D-19000, 1 & 2 DATED 4/18/74 AND DRAWINGS D-74000-1, 1 & 2 DATED 3/4/70, D-74000-1, 2 REV. 7/18/76 BY BETAN, KANGAS & POLIS

3" x 1/4" CL. 0 AD 2x6 BEYOND STAKES @ 4' O.C. 2x6 BEYOND.

TYP SECTION ACCESS ROAD TO PARKING LEVEL NO SCALE

**PHASE II MENLO COMMONS**  
 2140 SANTA CRUZ AVE  
 MENLO PARK, CALIF.

SITE PLAN ELECTRICAL

SCALE AS NOTED  
 DATE 03.01.77  
 PROJECT NO. E1