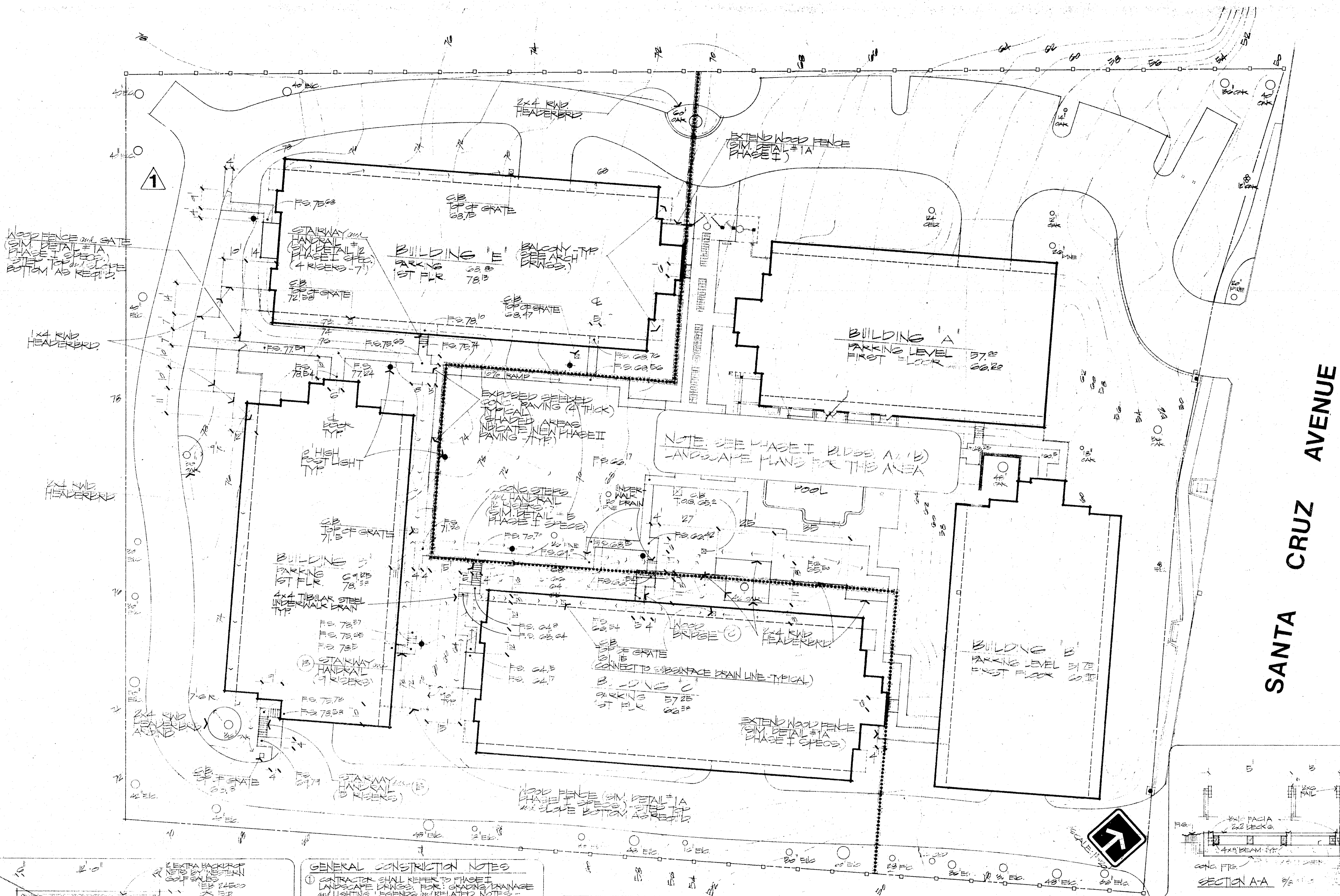
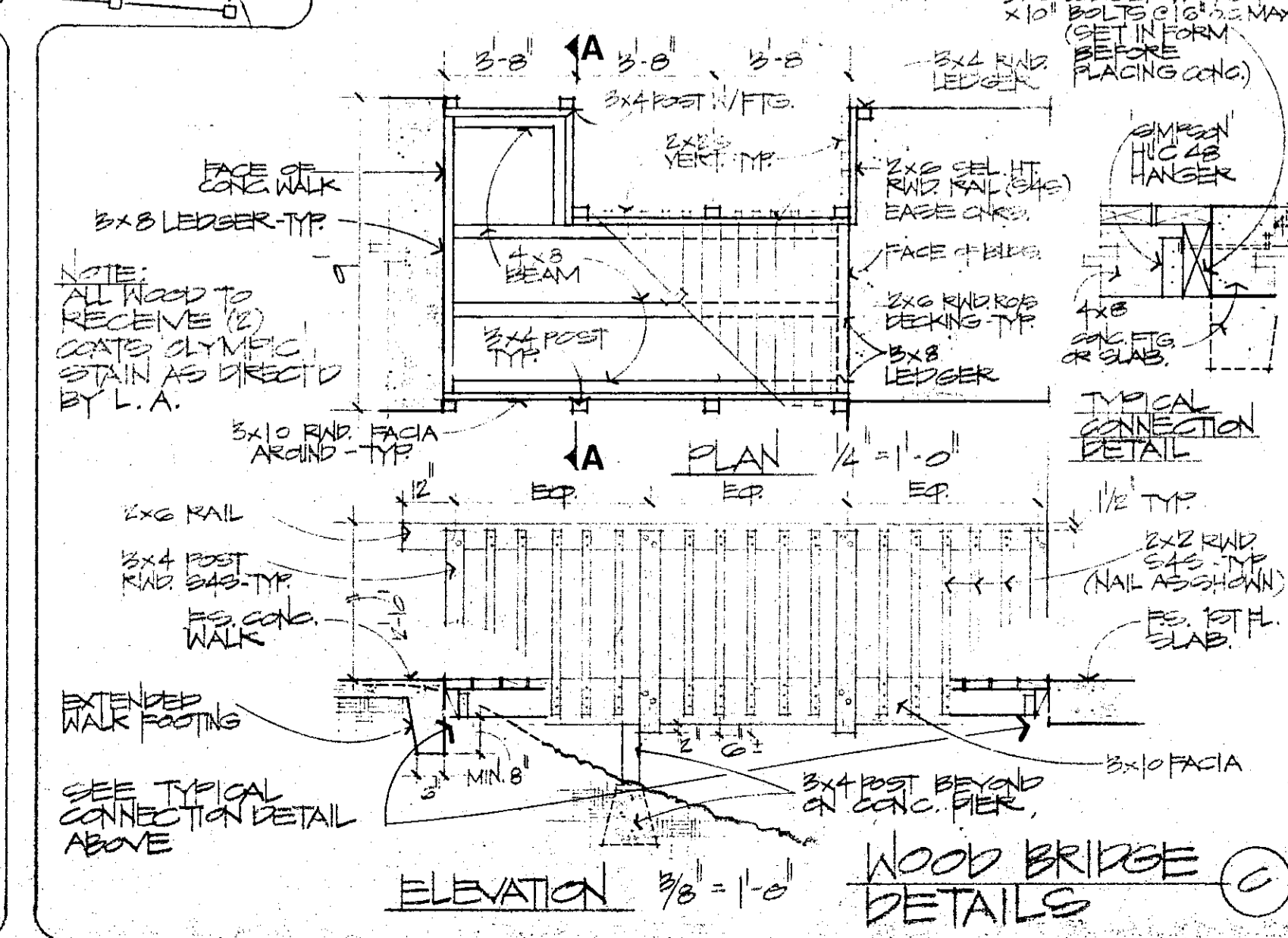
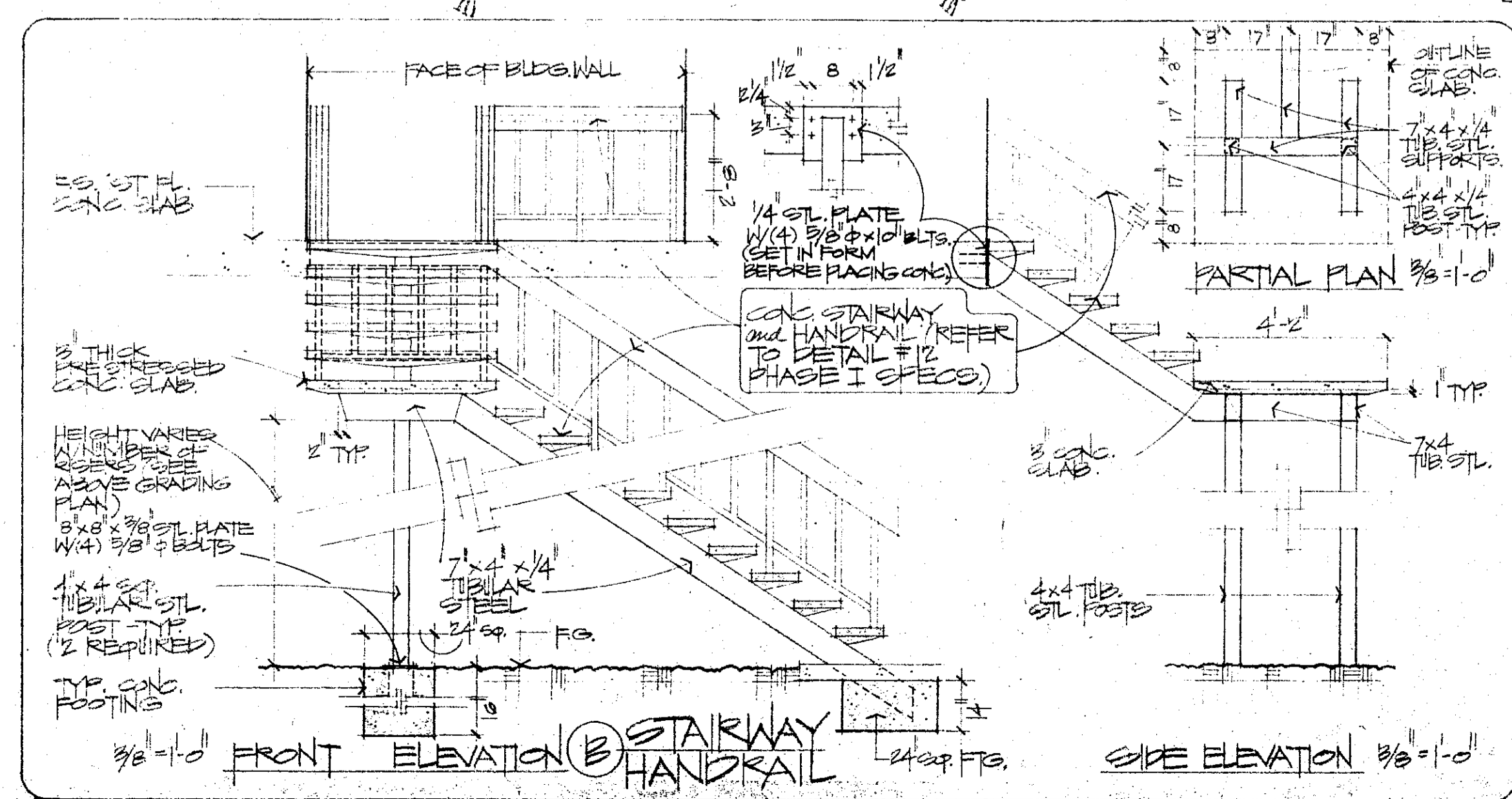
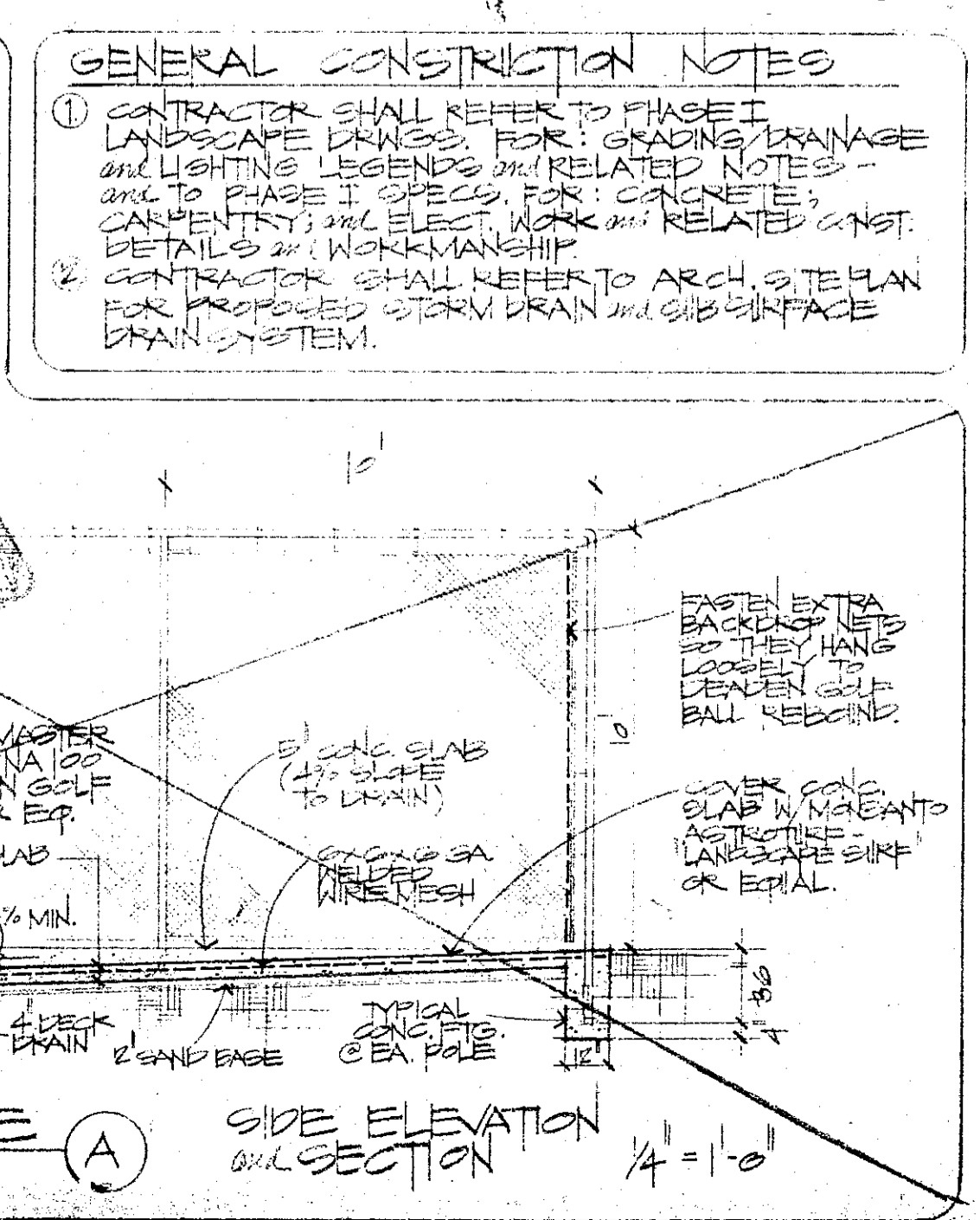
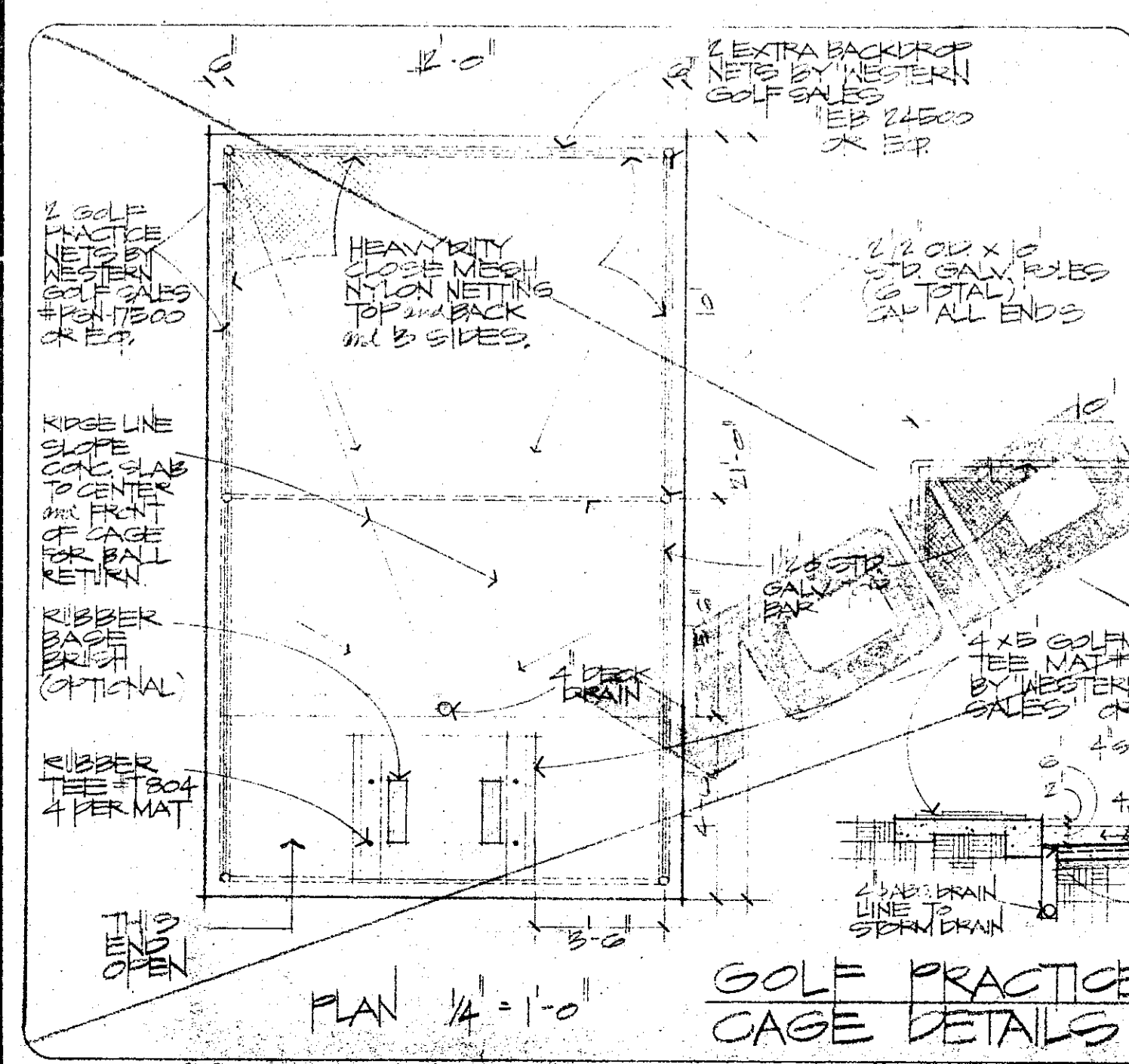


REVISION (JAN. 23, 1978)
 1 GOLF CASE DELETED



SANTA CRUZ AVENUE



GENERAL CONSTRUCTION NOTES
 1. CONTRACTOR SHALL REFER TO PHASE I LANDSCAPE PLANS FOR GRADING, DRAINAGE AND LIGHTING LEGENDS AND RELATED NOTES AND TO PHASE I SPECIFICATIONS FOR CONCRETE, CEMENTS, AND ELECTRICAL WORK AND RELATED CONSTRUCTION DETAILS IN WORKMANSHIP.
 2. CONTRACTOR SHALL REFER TO ARCH. SITE PLAN FOR PROPOSED STAIRWAY AND SUBSURFACE DRAIN SYSTEM.

**PHASE II
 MENLO COMMONS
 2140 SANTA CRUZ AVE
 MENLO PARK, CALIF.**

LANDSCAPE CONSTRUCTION, DETAILS, GRADING, and LIGHTING PLAN

SCALE AS NOTED	DRAWING NUMBER L1
DATE 4-15-77	PROJECT NO.