

### PROPOSED PLAN KEYNOTE

- 1 (N) PLUMBING ITEM
- 2 (E) DOOR TO REMAIN
- 3 (N) DRINKING FOUNTAIN
- 4 (N) LOCATION FOR (E) DOOR, SEE DOOR SCHEDULE
- 5 (E) WINDOW TO REMAIN
- 6 (N) DOOR WITH (E) LOCK, SEE DOOR SCHEDULE
- 7 (E) COLUMN TO REMAIN
- 8 (N) FIRE EXTINGUISHER 2  
A7.2
- 9 (E) MIRROR TO REMAIN
- 10 (N) FLOOR DRAIN 5  
A7.0
- 11 INDOOR, OUTDOOR UNIT, SMD
- 12 PROTECTIVE BOLLARDS
- 13 PROVIDE ACCESSIBLE HEIGHT SHOWER CONTROLS AT THIS LOCATION
- 14 PROVIDE ACCESSIBLE BENCH FOLD DOWN SEATING, AND BACKING FOR MOUNT/ SUPPORT SEE MANF.

GENERAL NOTES:

- THIS SHEET IS PART OF A SET & IS NOT TO BE USED ALONE.
- THIS SHEET IS NOT FOR CONSTRUCTION UNTIL THE ARCHITECT'S STAMP & SIGNATURE ARE ON THIS SHEET.
- THESE PLAN & PRINTS ARE OWNED BY THE ARCHITECT & ARE FOR USE ON THIS PROJECT ONLY. REPRODUCTION AND/OR DISTRIBUTION WITHOUT THE WRITTEN CONSENT OF THE ARCHITECT IS FORBIDDEN.

PROJECT:

## MENLO COMMONS

2140 Santa Cruz Ave, Menlo Park, CA 94025

CONTRACTOR

**PRELIMINARY PLANS  
NOT FOR CONSTRUCTION**

SHEET TITLE:

### PROPOSED FLOOR PLAN

### REVISIONS

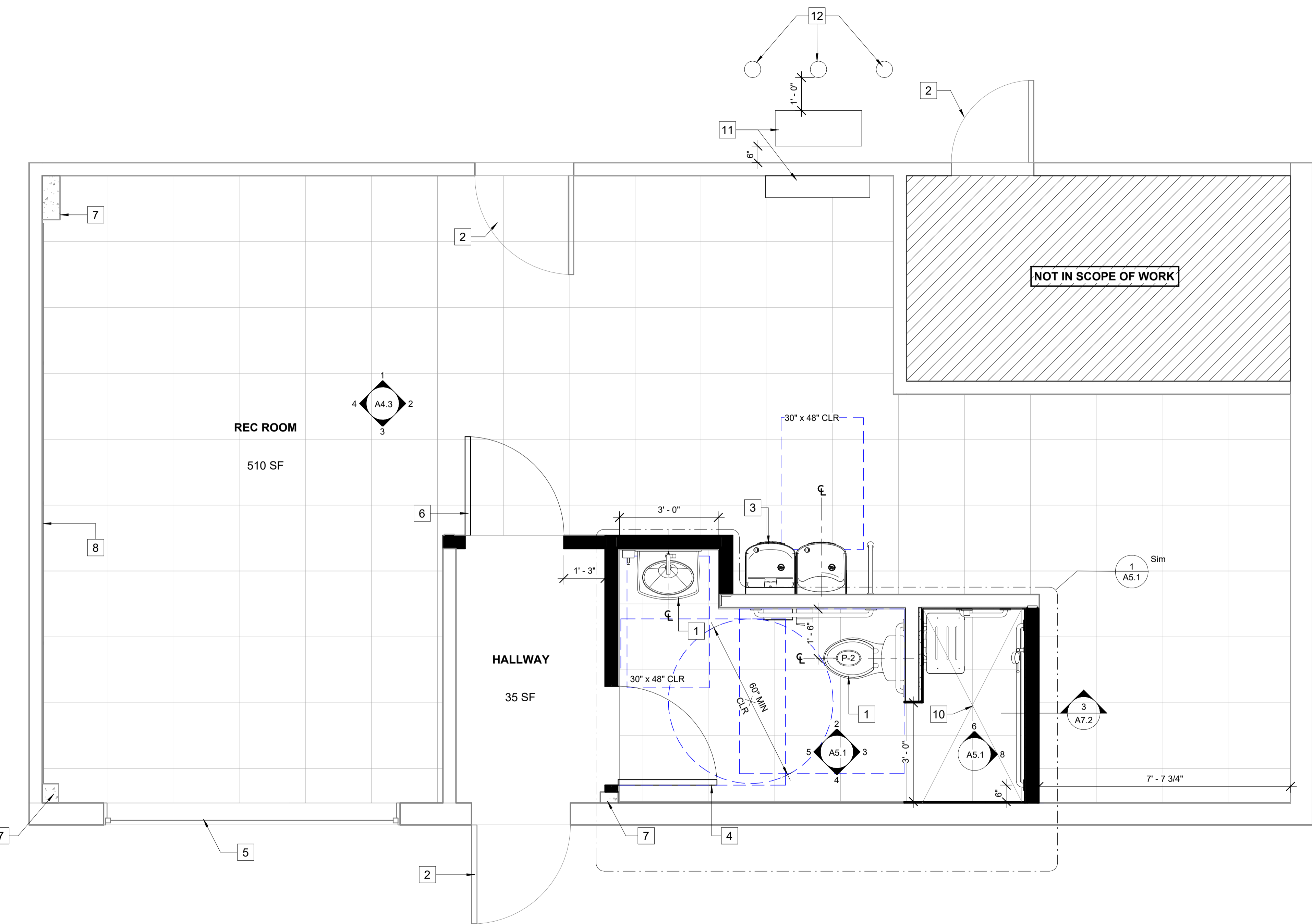
No.	Description	Date

### GENERAL NOTES

- SEE DOOR SCHEDULE FOR TREATMENT OF DOORS TO REMAIN AND FOR ALL (N) DOORS
- SEE FINISH PLAN FOR ALL (N) FINISHES
- SEE FOR POWER AND DATA OUTLET LOCATIONS

### WALL LEGEND

	(E) EXTERIOR WALL TO REMAIN
	(E) INTERIOR WALL TO REMAIN
	NEW 2X4 WOOD STUD @ 16" O.C. SEE INTERIOR ELEVATIONS FOR HEIGHT. 5/8" GYP BD. ON BOTH SIDES. USE GREEN BOARD IN WET AREAS AND WHERE TILE IS FINISH MATERIAL.



1 PROPOSED FIRST FLOOR PLAN  
1/2" = 1'-0"